

Customer :

customer

Customer part :

customer part

Comment :

Comment

S1=4.29

S2=4.3

Tmax=470

Tp S2=509.0

PI=0.5

HI=76

Sample =1750.30

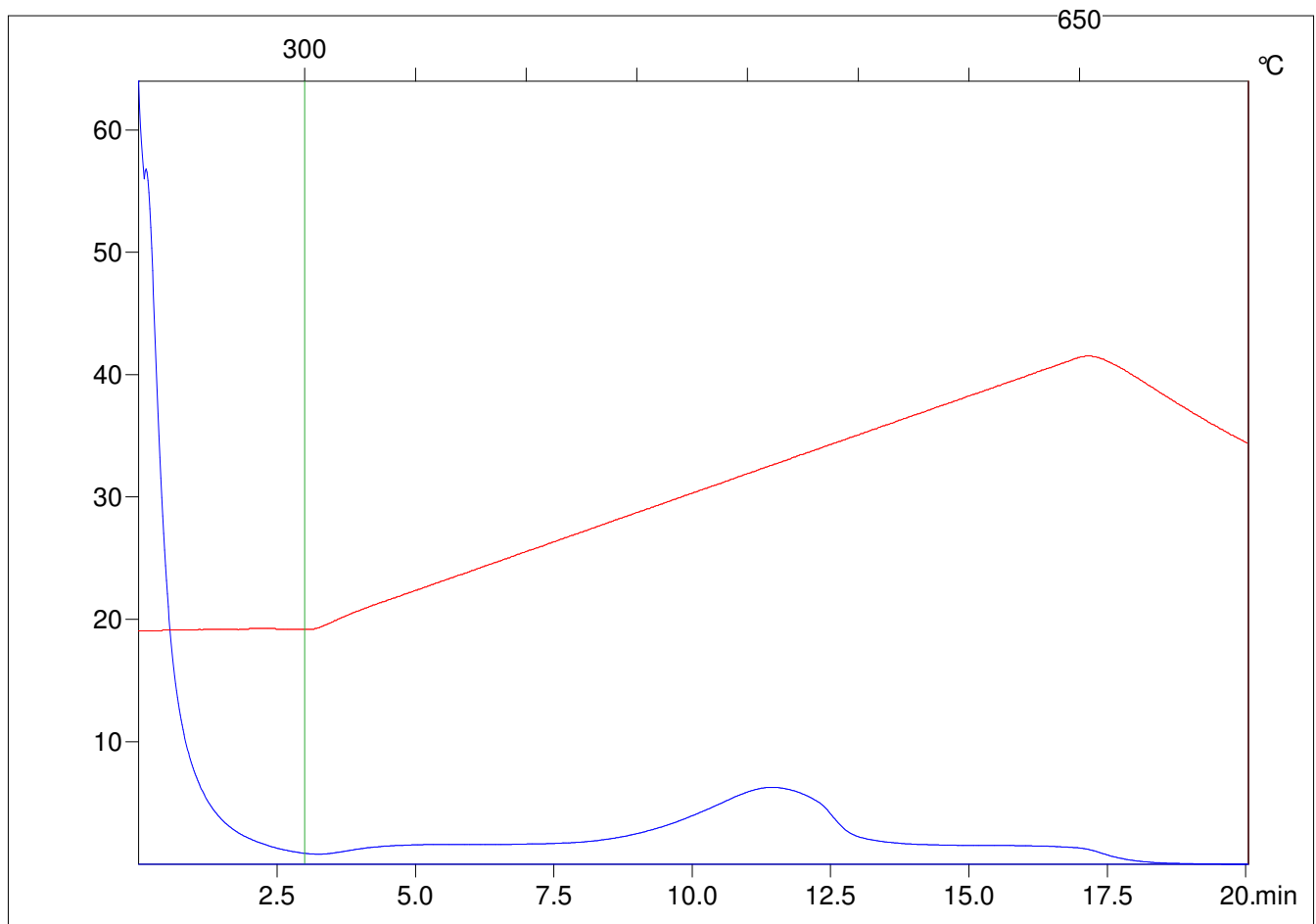
Method =Bulk Rock

Cycle=Basic

KFID(10*9)=1444

Qty =70.2

TOC=5.69



C:\VINC\PK2_1792\PK095.R00 : FID pyrolysis graphic

State

Pyro Status

Oxi Status